

Eagle River Presbyterian Church
July 11, 2021

GATHERING TO WORSHIP

Please take a moment during the Prelude to silence your cell phones and quietly prepare yourself for worship.

PRELUDE

WELCOME

*CALL TO WORSHIP

Leader: God has accomplished all things through Christ,

People: so that we might live as God's own children.

Leader: Let us give thanks to God

People: and live for the praise of God's glory.

*PRAYER OF INVOCATION

Loving God, you made this whole world and you made us to live in it. In Jesus, you even became a person like us to show us the way back to you. Help us to know Jesus today as we sing and pray and listen; through Jesus, we pray. **Amen.**

*HYMN "From All That Dwell Below the Skies" Hymnal 327

RECEIVING FORGIVENESS FROM GOD AND EACH OTHER

*CALL TO CONFESSION

*PRAYER OF CONFESSION: *Spoken and Silent (After the corporate Prayer of Confession, please take a few moments of silence to individually confess our sins to God.)*

Holy God, you call us to be your beloved children and to care for one another, yet we fail to love others and ourselves. Helpless and ashamed, we turn our hearts to you. Forgive us, and then tenderly teach us to stand strong and courageous in the fullness of your love, by the grace and mercy of Christ. Amen.

*DECLARATION OF FORGIVENESS

Leader: Sisters and brothers, God forgives us and strengthens us for love; therefore, be at peace.

People: In Christ we are forgiven! Thanks be to God.

CHILDREN'S MESSAGE

HEARING THE WORD

PSALM OF THE DAY Psalm 24 Pew Bible p.392

ANTHEM

Larry Baumgartner

SCRIPTURES 2 Samuel 6:1-5 Pew Bible p.218
Amos 7:7-15 Pew Bible p.651
Mark 6:14-29 Pew Bible p.711
Ephesians 1:3-14 Pew Bible p.827

MESSAGE **More Than Meets the Eye: On-the-Job Training**
Rev. Piper Cartland

RESPONDING TO THE WORD

SHARING OUR JOYS AND CONCERNS

PASTORAL PRAYER, followed by The Lord's Prayer (we say *sin*)

MINUTES FOR MINISTRY

OFFERING OURSELVES TO GOD

GOING INTO THE WORLD

*HYMN "God of Grace and God of Glory" Hymnal 307

*CHARGE AND BENEDICTION

POSTLUDE

*Those who are able please stand.

WELCOME! It is a joy to worship together in person. So that we may do so safely, here are the basic tenets for our COVID-19 Mitigation Plan: masks and social distancing are no longer required (but are recommended for those who are unvaccinated, immuno-compromised, or for anyone who feels more comfortable doing so for any reason); please place tithes/offerings in the offering plates at the back of the sanctuary; fellowship will be shared outside, as weather permits.



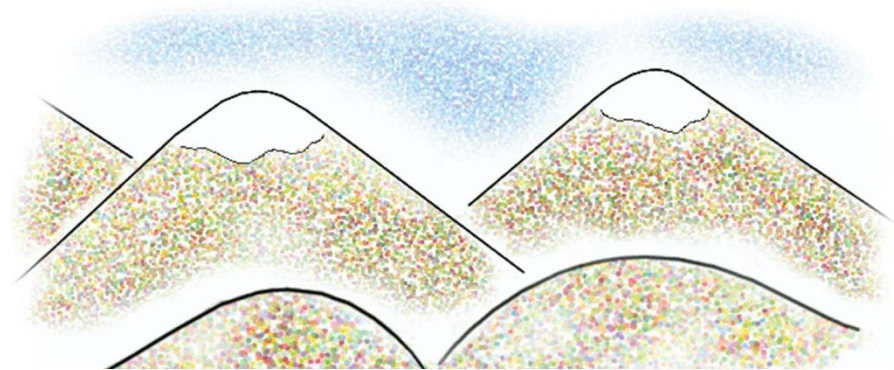
LARGE PRINT HYMNALS are on the last row of pews, with a black cover. If you use one, please put it back after worship.



ASSISTIVE LISTENING DEVICES available on request. Please request one from the Sound Tech at the sound desk.

There are cards in the pews for visitors to fill out and for anyone who needs to update their information. Please place the cards in the offering plates as needed. If you are visiting today, the worship service is our gift to you. Please contribute to the offering or not, as God leads. We delight in welcoming you, and we are glad that you're here!

Children up to kindergarten age are welcome in the nursery. There are clipboards with coloring pages in the narthex if your children wish to stay in the sanctuary.



SUMMER WORSHIP
Rejoice and Be Glad!



Eagle River Presbyterian Church
July 11, 2021

Weekly Walk

Sunday 10:00 am Worship

Last week's In-Person Attendance ----- 26

Month to Date Income ----- \$13,889.80

Month to Date Expenses ----- \$7,611.44

The rose on the pulpit this morning celebrates the birth of Nathan and Tiana Walters' daughter Norah Gretchen. Norah was born on July 1 and weighed 7 lbs. 5 oz. She's the first grandchild of Bill and Diane. Congratulations to everyone!

The **Food Pantry** will be having their annual volunteer picnic on Sunday July 25, beginning at 2 pm. It will be in the gravel parking lot. All volunteers are welcome and encouraged to attend!



Also in our parking lot... this Saturday July 17, the Bear Paw festival 5k race will be ending at the church. They anticipate being here from 8 am to noon.



As a reminder, the church **garage sale**, usually held during the Bear Paw festival, has been postponed until September. Once the date has been set, we will accept donations the week before the sale.

Ways you can keep up with your financial stewardship:

- 1) If you're worshipping with us in person, you may leave your gift in one of the offering plates as you leave the sanctuary this morning. The plates are on the table to the right of the main door.
- 2) Donate online with a credit card by clicking the link from our website: www.erpresbyterian.org.
- 3) Visit your local bank or your bank's website and set up a recurring electronic payment. Your bank may require the church's account number. Please call the office for that information.
- 4) Checks can also be mailed to PO Box 771337 Eagle River, AK

Weekly Walk

Sunday 10:00 am Worship

Last week's In-Person Attendance ----- 26

Month to Date Income ----- \$13,889.80

Month to Date Expenses ----- \$7,611.44

The rose on the pulpit this morning celebrates the birth of Nathan and Tiana Walters' daughter Norah Gretchen. Norah was born on July 1 and weighed 7 lbs. 5 oz. She's the first grandchild of Bill and Diane. Congratulations to everyone!

The **Food Pantry** will be having their annual volunteer picnic on Sunday July 25, beginning at 2 pm. It will be in the gravel parking lot. All volunteers are welcome and encouraged to attend!



Also in our parking lot... this Saturday July 17, the Bear Paw festival 5k race will be ending at the church. They anticipate being here from 8 am to noon.



As a reminder, the church **garage sale**, usually held during the Bear Paw festival, has been postponed until September. Once the date has been set, we will accept donations the week before the sale.

Ways you can keep up with your financial stewardship:

- 1) If you're worshipping in person, you may leave your gift in one of the offering plates as you leave the sanctuary this morning. The plates are on the table to the right of the main door.
- 2) Donate online with a credit card by clicking the link from our website: www.erpresbyterian.org.
- 3) Visit your local bank or your bank's website and set up a recurring electronic payment. Your bank may require the church's account number. Please call the office for that information.
- 4) Checks can also be mailed to PO Box 771337 Eagle River, AK

