

Eagle River Presbyterian Church
July 18, 2021

GATHERING TO WORSHIP

Please take a moment during the Prelude to silence your cell phones and quietly prepare yourself for worship.

PRELUDE

WELCOME

*CALL TO WORSHIP

Leader: I will sing of your steadfast love, O Lord, forever;

People: with my mouth I will proclaim your faithfulness to all generations.

Leader: I declare that your steadfast love is established forever;

People: your faithfulness is as firm as the heavens.

Leader: You said, "I have made a covenant with my chosen one, I have sworn to my servant David: 'I will establish your descendants forever and build your throne for all generations.'"

People: Praise the Lord!

*PRAYER OF INVOCATION

God of grace, you have given us minds to know you, hearts to love you, and voices to sing your praise. Fill us with your Spirit, that we may celebrate your glory and worship you in spirit and in truth through Jesus Christ, our Lord. **Amen.**

*HYMN "The Church's One Foundation" Hymnal 321

RECEIVING FORGIVENESS FROM GOD AND EACH OTHER

*CALL TO CONFESSION

*PRAYER OF CONFESSION: *Spoken and Silent (After the corporate Prayer of Confession, please take a few moments of silence to individually confess our sins to God.)*

Merciful God, you made us in your image, with a mind to know you, a heart to love you, and a will to serve you. But our

knowledge is imperfect, our love inconstant, our obedience incomplete. Day by day, we fail to grow into your likeness. In your tender love, forgive us through Jesus Christ, our Lord. Amen.

*DECLARATION OF FORGIVENESS

Leader: Hear the good news!

People: God demonstrates his own love for us in this: While we were still sinners, Christ died for us. For he has rescued us from the dominion of darkness and brought us into the kingdom of the Son he loves, in whom we have redemption, the forgiveness of sins. Therefore, since we have been justified through faith, we have peace with God through our Lord Jesus Christ.

Leader: Know that you are forgiven, and be at peace.

People: Thanks be to God!

CHILDREN'S MESSAGE

HEARING THE WORD

PSALM OF THE DAY Psalm 89:1-4, 20-37 Pew Bible p.422

ANTHEM

Larry Baumgartner

SCRIPTURES

2 Samuel 7:1-14a

Pew Bible p.219

Jeremiah 23:1-6

Pew Bible p.553

Mark 6:30-34, 53-56

Pew Bible p.712

Ephesians 2:11-22

Pew Bible p.827

MESSAGE **More Than Meets the Eye: Looking for Good Shepherds**

Rev. Piper Cartland

RESPONDING TO THE WORD

SHARING OUR JOYS AND CONCERNS

PASTORAL PRAYER, followed by The Lord's Prayer (we say *sin*)

MINUTES FOR MINISTRY

OFFERING OURSELVES TO GOD

GOING INTO THE WORLD

*HYMN “Called As Partners in Christ’s Service” Hymnal 761

*CHARGE AND BENEDICTION

POSTLUDE

*Those who are able please stand.

WELCOME! It is a joy to worship together in person. So that we may do so safely, here are the basic tenets for our COVID-19 Mitigation Plan: masks and social distancing are no longer required (but are recommended for those who are unvaccinated, immunocompromised, or for anyone who feels more comfortable doing so for any reason); please place tithes/offerings in the offering plates at the back of the sanctuary; fellowship will be shared outside, as weather permits.



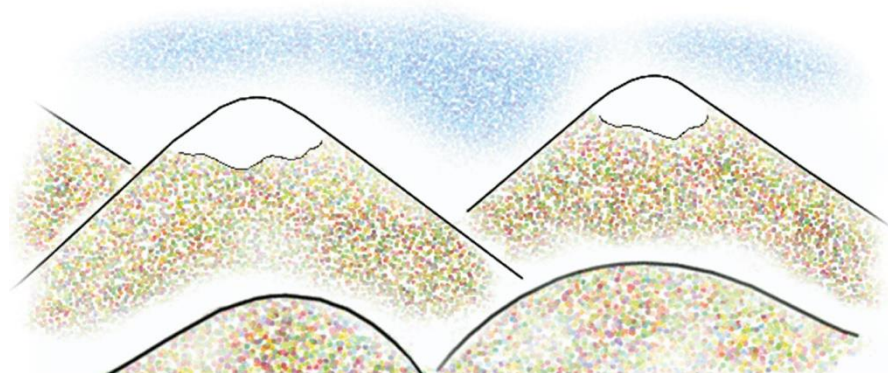
LARGE PRINT HYMNALS are on the last row of pews, with a black cover. If you use one, please put it back after worship.



ASSISTIVE LISTENING DEVICES available on request. Please request one from the Sound Tech at the sound desk.

There are cards in the pews for visitors to fill out and for anyone who needs to update their information. Please place the cards in the offering plates as needed. If you are visiting today, the worship service is our gift to you. Please contribute to the offering or not, as God leads. We delight in welcoming you, and we are glad that you’re here!

Children up to kindergarten age are welcome in the nursery. There are clipboards with coloring pages in the narthex if your children wish to stay in the sanctuary.



SUMMER WORSHIP
Rejoice and Be Glad!



Eagle River Presbyterian Church
July 18, 2021


Weekly Walk

Sunday 10:00 am Worship

Last week's In-Person Attendance ----- 26

Month to Date Income ----- \$16,342.80

Month to Date Expenses ----- \$9,720.08

 Food Pantry volunteers are invited to attend the annual volunteer picnic next Sunday, July 25. It will begin at 2 pm in our gravel parking lot.

Thank you to the Musick family for coordinating the work being done on the front of our building. They have been sanding, priming, and painting the exterior. This week additional help was given by a missionary group, visiting from Georgia.



We are continuing to collect clothing for Hiland Mountain Correctional Center. In the warmer months, they appreciate donations of lighter clothing such as leggings, sweatshirts, and t-shirts. The collection box is in the Narthex.



Ways you can keep up with your financial stewardship:

- 1) If you're worshipping with us in person, you may leave your gift in one of the offering plates as you leave the sanctuary this morning. The plates are on the table to the right of the main door.
- 2) Donate online with a credit card by clicking the link from our website: www.epresbyterian.org.
- 3) Visit your local bank or your bank's website and set up a recurring electronic payment. Your bank may require the church's account number. Please call the office for that information.
- 4) Checks can also be mailed to PO Box 771337 Eagle River, AK


Weekly Walk

Sunday 10:00 am Worship

Last week's In-Person Attendance ----- 26

Month to Date Income ----- \$16,342.80

Month to Date Expenses ----- \$9,720.08

 Food Pantry volunteers are invited to attend the annual volunteer picnic next Sunday, July 25. It will begin at 2 pm in our gravel parking lot.

Thank you to the Musick family for coordinating the work being done on the front of our building. They have been sanding, priming, and painting the exterior. This week additional help was given by a missionary group, visiting from Georgia.



We are continuing to collect clothing for Hiland Mountain Correctional Center. In the warmer months, they appreciate donations of lighter clothing such as leggings, sweatshirts, and t-shirts. The collection box is in the Narthex.



Ways you can keep up with your financial stewardship:

- 1) If you're worshipping with us in person, you may leave your gift in one of the offering plates as you leave the sanctuary this morning. The plates are on the table to the right of the main door.
- 2) Donate online with a credit card by clicking the link from our website: www.epresbyterian.org.
- 3) Visit your local bank or your bank's website and set up a recurring electronic payment. Your bank may require the church's account number. Please call the office for that information.
- 4) Checks can also be mailed to PO Box 771337 Eagle River, AK

