

GATHERING TO WORSHIP

Please take a moment during the Prelude to silence your cell phones and quietly prepare yourself for worship.

WELCOME AND MINUTES FOR MINISTRY

PRELUDE

*CALL TO WORSHIP

Leader: Jesus said, "Follow me."

People: Jesus said, "Take heart, it is I; do not be afraid."

Leader: Jesus said, "Forgive seventy times seven."

People: Jesus said, "Feed my sheep."

Leader: In response, we say: "Here's my heart. Take and seal it.

People: Seal it for thy courts above."

ALL: Let us worship God with all our hearts.

HYMN "Christ Is Risen! Shout Hosanna!" Hymnal 248

*PRAYER OF AFFIRMATION OF FAITH

We believe in a God who shows up in our lives – surprising and catching us off-guard in the best of ways. We believe in a God who cares for God's people – a shepherd who longs for her sheep to be fed and tended. We believe in a God who took on flesh – a God whose love changed the world as we know it. We believe that this here-and-now God invites us out of the boat, calling ordinary people like Peter, like us, into a life of service and community. And so we give our hearts. We give our whole hearts and nothing less. Amen.

RECEIVING FORGIVENESS FROM GOD AND EACH OTHER

*PRAYER OF CONFESSION:

Gracious God, Like Peter, we crawl out of the boat only to sink. You tell us your truth and we push it away. We ask about forgiveness and are surprised by abundance. We profess our faith and deny it three times. We run to the empty tomb and leave in silence. Over and over again, we find ourselves wandering along the journey of faith. Tether us to your heart. Forgive our surprise, our denial, and our limited imagination. Call us out of the boat once more. We are eager to return to you. With humble hearts we pray, amen.

*DECLARATION OF FORGIVENESS

CHILDREN'S MESSAGE

HEARING THE WORD

PRAYER OF ILLUMINATION

SCRIPTURE

John 21:1-19

MESSAGE

Pastor Blake Severson

HYMN

"Will You Come and Follow Me"

Hymnal 726

RESPONDING TO THE WORD

COMMUNION SERVICE

INVITATION TO THE TABLE

PRAYER OF THANKSGIVING AND THE LORD'S PRAYER

COMMUNION OF THE PEOPLE

PRAYER AFTER COMMUNION

GOING INTO THE WORLD

INVITATION TO THE OFFERING

OFFERING OURSELVES TO GOD

OFFERTORY

* DOXOLOGY "Praise God from Whom All Blessings Flow"

Hymnal 606

PRAYER OF THANKSGIVING

HYMN "Longing for Light, We Wait in Darkness (Christ Be Our Light)" Hymnal 314

*CHARGE AND BENEDICTION

POSTLUDE

**Those who are able please stand*

WELCOME to worship – we are glad that you're here! If you are visiting today and would like to share your contact information, there are welcome cards in the pew pockets. Please fill one out and place it in the offering plate. Everyone is invited to stay for coffee, snacks, and fellowship in the narthex after worship.



LARGE PRINT HYMNALS with a black cover are on the small bookcase in the rear of the sanctuary.

Children up to Kindergarten age are welcome in the nursery. There are clipboards with coloring pages in the narthex if your children wish to stay in the sanctuary.

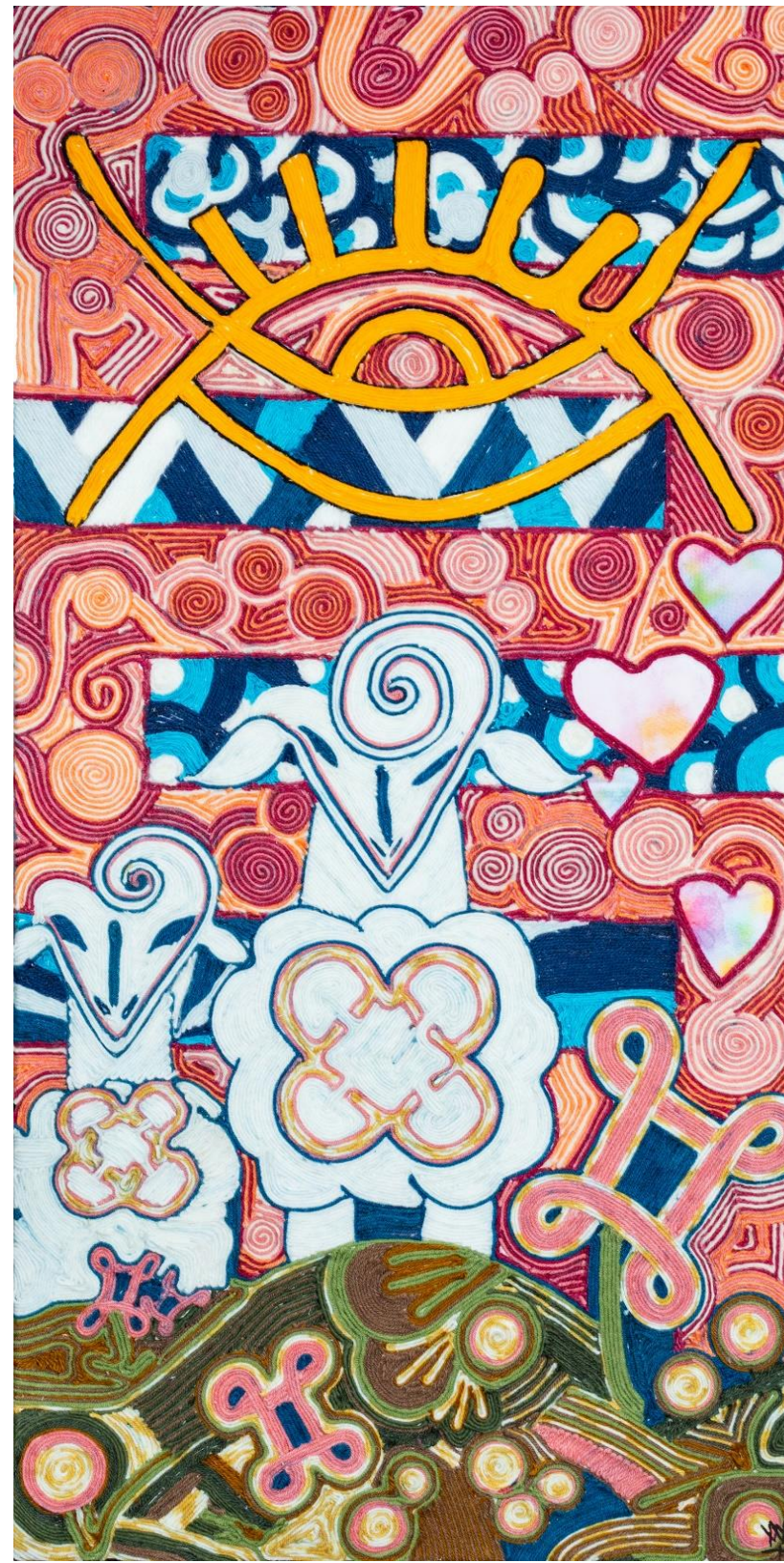


Bulletin cover art: “Feed My Sheep” by Rev. Nicolette Peñaranda

From the artist: As a mixed media artist, I wanted to try something I’ve never done before – perhaps the silliest decision someone with a deadline could make. This entire piece (with the exception of the three hearts) is made of yarn. For some reason, the feeling of a sheep’s wool kept sticking out to me every time I read this text (John 21:1-19). We refer to Jesus as both lamb of God and the shepherd. So why not lean into sheep imagery? This post-resurrection story concludes the wandering for Peter so the subject of this piece sits in front of the Adinkra symbol, Nkyinkyim, for life’s twisted journey. We have seen the ins and outs of his ministry as he accompanies Jesus, which brings us to this dialogue between the two. In this piece, the two of them are portrayed as sheep, Peter being at the right hand of Jesus. The sheep are branded with Agyinduwura at the center of their chests. They carry with them a symbol of loyalty and faithfulness. The face of each sheep is the symbol Kokuromotie, to represent cooperation and harmony. Jesus asking Peter to feed his sheep demonstrates the faith that Jesus has in Peter to do this work. This value of cooperation is also present in the Mpatapo-shaped flowers in the field. They are symbols of peace, forgiveness, and reconciliation. Above the sheep sits Kojo Baiden. God has traditionally been represented as the sun in various cultures, which brings us to this omnipresent symbol operating as such in this piece. And to the left we see Akoma, or hearts. While we interpret the heart as love, it is also a symbol for endurance and patience.

Here’s my heart. Here are the things I care about so deeply. And you – someone who makes mistakes, doesn’t follow directions, and sometimes even betrays me – you are so loved and trusted enough to keep this good work going even after I’m gone.

This is a message to all of us. It doesn’t matter how poorly you may think of yourself or how others may view you. To Christ, you are beautifully and fearfully made. And Christ believes in you in spite of it all.





Welcome to Eagle River Presbyterian Church

April 7, 2024

Weekly Walk

Sunday	10:00 AM	Worship
Wednesday	9:30 AM	Coffee hour at church

Last week's In-Person Attendance ----- 85
 Year-to-Date Regular Income ----- \$66,382.42
 Year-to-Date Regular Expenses ----- \$77,076.68

There will be a new **member class** starting later this month, meeting times to be determined. Please let the office or Pastor Blake know if you would like to participate.



We are still looking for a few more volunteers to join the **Mission Study team** as part of the process of calling a permanent pastor. This group will seek to answer three core questions about ERPC: 1)Who have we been? 2)Who are we now? 3)Who do we want to be moving forward?
 The deadline for forming the team is the next Session meeting-- April 16.



If you are doing any spring cleaning, remember to set aside items for the Christian Education garage sale **on June 1!** We will be accepting donations the week prior, and there will be lots of opportunities to volunteer with set-up, during the sale, and clean-up.

Soon we will be forming an ERPC team for the Alaska Run for Women on **June 8**, benefitting breast cancer research. More information- and a T-shirt design! -to come.



Welcome to Eagle River Presbyterian Church

April 7, 2024

Weekly Walk

Sunday	10:00 AM	Worship
Wednesday	9:30 AM	Coffee hour at church

Last week's In-Person Attendance ----- 85
 Year-to-Date Regular Income ----- \$66,382.42
 Year-to-Date Regular Expenses ----- \$77,076.68

There will be a new **member class** starting later this month, meeting times to be determined. Please let the office or Pastor Blake know if you would like to participate.



We are still looking for a few more volunteers to join the **Mission Study team** as part of the process of calling a permanent pastor. This group will seek to answer three core questions about ERPC: 1)Who have we been? 2)Who are we now? 3)Who do we want to be moving forward?
 The deadline for forming the team is the next Session meeting-- April 16.



If you are doing any spring cleaning, remember to set aside items for the Christian Education garage sale **on June 1!** We will be accepting donations the week prior, and there will be lots of opportunities to volunteer with set-up, during the sale, and clean-up.

Soon we will be forming an ERPC team for the Alaska Run for Women on **June 8**, benefitting breast cancer research. More information- and a T-shirt design! -to come.

